



## How do you know they know what they know? With Examiner Express, it's easy

Computer-managed assessments provide valuable insights into what your students have learned and where they need help. They can also be costly and confusing to buy.

Examiner Express<sup>™</sup> combines powerful education assessment tools with optical mark reader hardware in a single, easy-to-use package. Just plug the built-in optical mark reader into the USB port of your Windows PC, run our quick-install setup software... and you have one of the most powerful assessment systems on the market today.

Best of all, Examiner express costs about a fifth the total cost of ownership of comparable systems, without all the do-it-yourself hassles. That's an important consideration in today's tight budget environments.

With Examiner Express, spending hours on grading and student reports is a thing of the past. Create and load an answer key in less than one minute. Grade an entire test as fast as you can read mark-sense cards into the scanner. Generate sophisticat-

- **Turnkey hardware and software**
- **Features you need, fast & easy to use**
- **1/5 the cost of comparable systems!**

ed reports on classes, tests or individual students almost instantly.

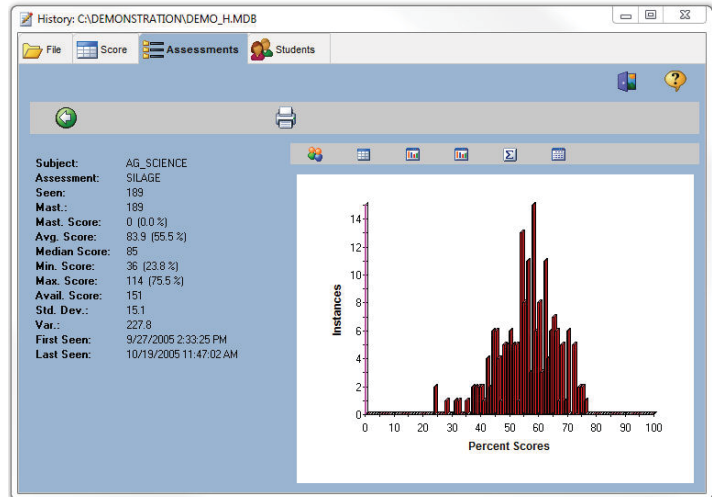
Design, grade and analyze assessments using the same powerful tools that governments and large corporations rely on. Examiner Express lets you take back your classroom without breaking the budget.

Examiner Express is a complete, turnkey system for grading and analyzing paper-and-pencil assessments. Integrated with Chatsworth Data Corporation's optical mark recognition (OMR) scanners, it helps educators and assessors design, deliver, analyze and report on student assessments.

Examiner Express offers a wide range of features to ensure powerful, accurate assessments:

- Up to 10 alternatives per item
- Up to 200 items per assessment
- Unlimited assessment forms
- Score assessments as quickly as you can feed OMR cards into the scanner
- Quality assurance checks are made during the scanning process to insure data integrity
- Assessment results are available as soon as scanning has been completed.
- Reports available on a by-assessment or by-student basis
- Report "filtering" is available based on assessment stamping during the scanning process
- Summative assessments with graphs and tabular reports:
  - ◊ Mean, median, standard deviation, and variance
  - ◊ Graphical plotting by raw and percentage scores
  - ◊ Item analysis showing difficulty, point biserial, as well as alternative response tallies
  - ◊ Student lists showing individual assessment information
- Summative examinee reports:
  - ◊ Completed assessment lists
  - ◊ Change reports showing averages and progress
  - ◊ Individual assessment reports show scores, responses

Chatsworth ACP 100 OMR Scanner Specifications	
<b>Paper path</b>	Easily accessible for clearing jams and cleaning the optic head
<b>Paper types and sizes</b>	18- to 100-lb bond, ledger, index or OCR (.0035" to 0.15" media thickness) Up to 3.25" x 5" to 3.25" x 14"
<b>Scan area</b>	12 rows by up to 80 lines
<b>Feed method</b>	Manual insertion
<b>Throughput</b>	25 to 30 cards per minute
<b>Form marking</b>	#2 pencil, blue or black ballpoint pen, blue or black felt-tip pen, preprinted marks
<b>Interface</b>	USB
<b>Dimensions</b>	5.2" wide x 2.4" hgh x 5.3" long (134.21mm x 82.93mm x 134.21mm)
<b>Weight</b>	2.5 lbs. (1.1kg)
<b>Power</b>	Universal power adapter 100-240 VAC 47 - 63 Hz
<b>Certification</b>	UL, FCC, CE for OMR and power adapter
<i>Hardware specifications supplied by Chatsworth Data Corporation and are subject to change without notice</i>	



### Examiner Express Software Specifications

<b>Hardware requirements</b>	At least 512MB system memory
	At least 50MB free hard disk space
	CD-ROM, USB port or network connection needed for installation
	USB port will be required for scanner
<b>Operating system</b>	Microsoft Windows XP-Pro SP2 or higher, Windows Vista, Windows 7
<b>Data capacity</b>	Single assessments up to 200 items (limited only by scan sheet size)
	Unlimited number of answer keys
	Unlimited number of scored assessments
<b>Item types supported</b>	Single and multiple correct multiple-choice; true/false
<b>Answer key</b>	Scanned via OMR
<b>Reporting capabilities</b>	Direct print or Adobe Acrobat® compatible PDF files
<i>Software specifications subject to change without notice</i>	

### *the examiner corporation*

The Examiner Corporation has been delivering industry-leading computer-managed assessment systems since 1985. Developed by skilled psychometricians and testing experts, our assessment tools are used by organizations around the world, including Boeing, Toyota, Underwriters' Laboratories, The London Stock Exchange, the US government and many others. To learn how The Examiner can help your organization, please contact us at:

**600 Marshall Ave., Ste. 100**  
**Saint Paul, MN 55102 USA**  
**651.451.7360 – 800.395.6840**  
**www.xmn.com**  
**examine@xmn.com**